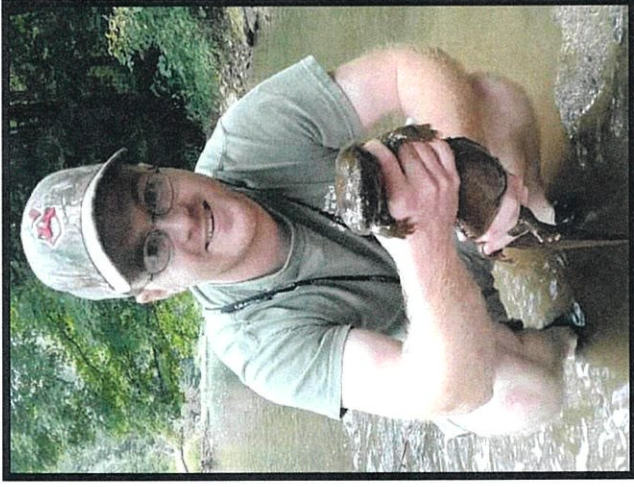


**COLUMBIANA COUNTY
PARK DISTRICT
HELLBENDER BLUFF PARK**



Parks are open daily from
dawn to dusk.
All programs are free and
open to the public,
unless otherwise indicated.



330-424-9078

Please go to:
www.facebook.com/CCparkdistrict
or
www.columbianacountyparkdistrict.com

Greenway Bike Trail

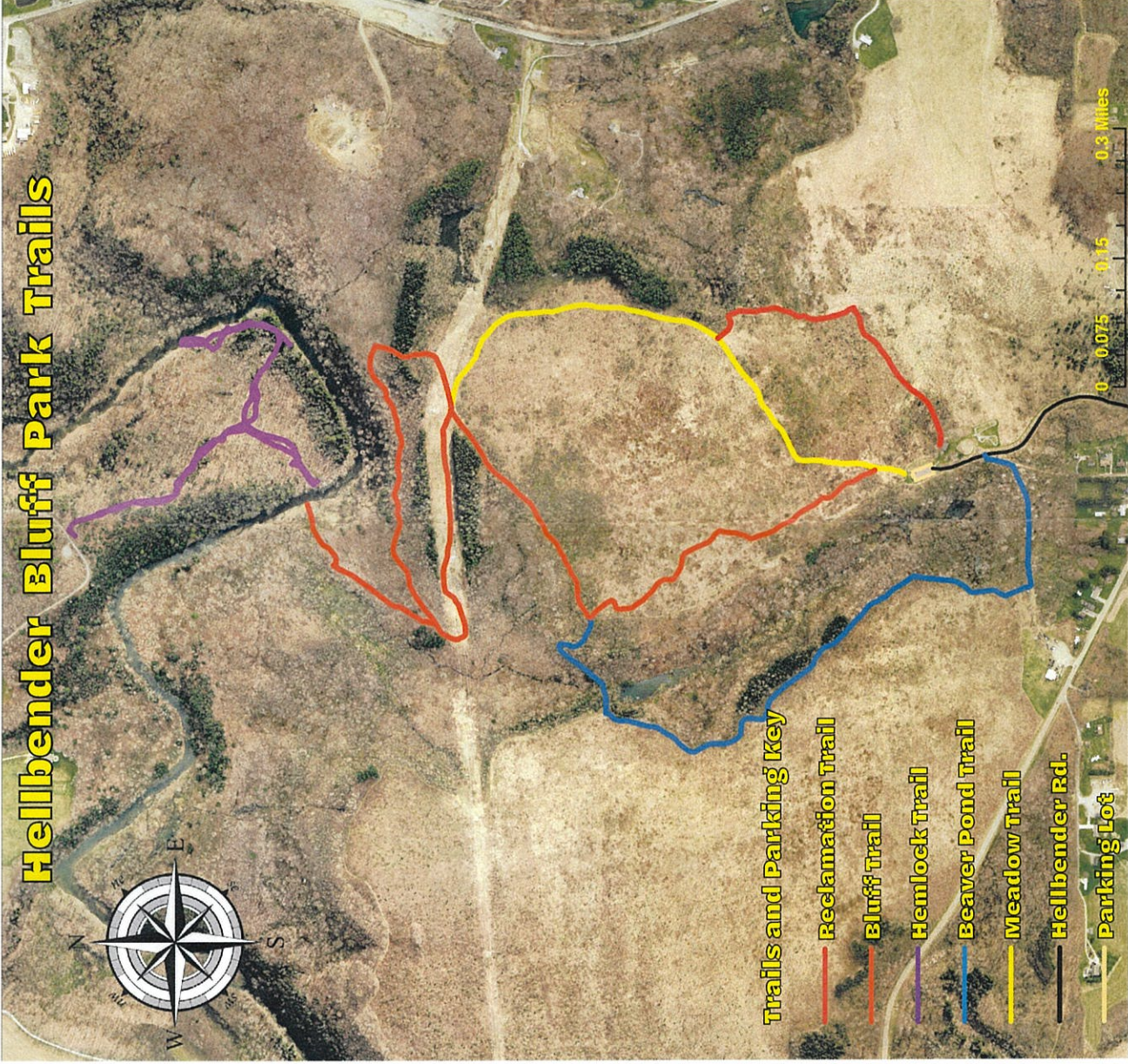
232 South Market St., Lisbon

Hellbender Bluff Park

14448 East Liverpool Rd., Lisbon

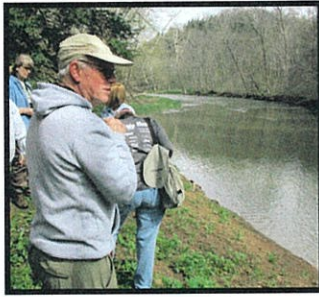
Scenic Vista Park

11523 Wayne Bridge Rd., Lisbon



Hellbender Bluff Park

Welcome to Hellbender Bluff Park, one of the Columbiana County Park District's best kept secrets.



Located off East Liverpool Road in Madison Township, the 732 acre park straddles the West Fork of the Little Beaver Creek.

The park's name comes from a "bluff" that lies in the northern third of the property and features a deep gorge, which provides a cool climate allowing Canadian hemlock, wildflowers and other old growth trees to flourish.

Its second name comes from an animal that lives in the West Fork's waters. The West Fork's waters are clear and provide perfect habitat for Ohio's endangered giant salamander known as the "hellbender."

Thus, the name: Hellbender Bluff.



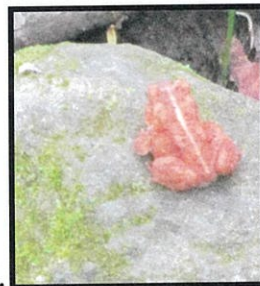
The park's unusual bluff occurred because the sandstone in the area resisted erosion from the West Fork's passing through the hillside, which created a cliff. Cool air along the stream valley moves up the cliff's walls, creating a distinctly different environment.



The northern portion of the park is separated by the rest of the property by the West Fork. It is accessible from Lones Road and a small parking lot is available on the north side of the road. A relatively clear but unmarked trail, leads from the lot down to the creek, which provides excellent fishing for smallmouth bass and other species.

Songbirds and wildflowers abound in this area as well, and keep your eyes open for the nesting pair of bald eagles!

The park has a very different character to the south of the creek. The bulk of this area features disturbed terrain, which is the result of years of surface mining for coal and the reclamation and reforestation efforts that followed.



This area was mined for coal off and on from the early 1950's through the 1970's, using a technique known as strip mining. This method involved removing layers of rock to expose the coal. The rock was dumped to one side, leaving deep piles of jumbled rock slabs and big holes in the ground, which often filled with acidic water.



Reclaiming mined areas became mandated by the government in 1977. A decade later, Hellbender Bluff's lands started to be restored.

When the Park District obtained this tract of land in 2005, the south portion of the property consisted of a sloping field. To create a better habitat for wildlife, the Park District partnered up with other organizations. To make the compacted soil better for deep rooted trees, a large blade was drawn across the slope, ripping the soil and creating ridges of rocks, and miniature hills and valleys. This action allowed tree to take root and water to soak in.

A series of plantings of both conifers and hardwoods occurred in 2007, 2011, 2012 and the spring of 2019. The only

downside is that while this ripped soil technique allows trees to take root, it created a terrain that can be difficult for the hiker to navigate.



Nonetheless, the park provides the hiker with a variety of experiences. Newly marked trails in the southern part of the park were carefully chosen to avoid the roughest terrain, while providing access to open fields, dotted with young trees, shrubs and meadows. These areas host abundant wildflowers, songbirds and butterflies, including the Monarch.

The Bluff Trail leads the hiker through these fields and then to the top of the bluff overlooking the West Fork and ultimately down to the stream. The trail is slight over 2 miles long round-trip and is strenuous but it does provide the total Hellbender Bluff experience.

Other trails include the Meadow Trail, the Beaver Pond Trail (keep your eyes open for beavers), and the Reclamation trail. Each trail is marked with colored trail markers.



Visit **Hellbender Bluff Park** and see for yourself the beauty of this spot!